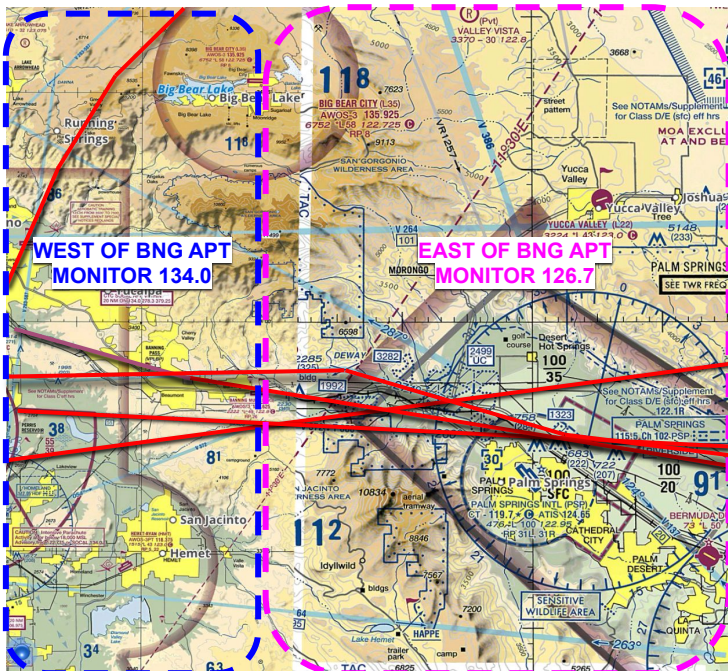


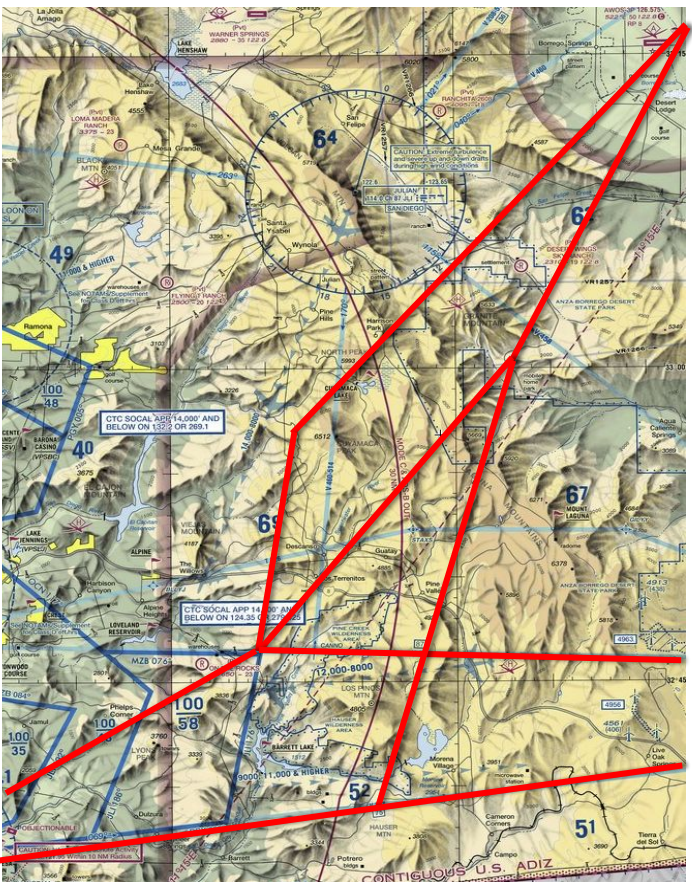
Banning Pass ATC Guide



Reduce the risk of powered traffic hazards, help ATC ensure adequate traffic separation.

- Ensure transponder is in ALT mode squawking **1202**
- When approaching San Jacinto northbound, or San Gorgonio Southbound, Monitor the Appropriate SOCAL ATC Frequency:
 - **134.0** when **WEST** of the Banning Airport
 - **126.7** when **EAST** of the Banning Airport
- **127.0** when crossing the Cajon Pass
- If checking in with ATC while crossing the Banning pass say:
“SOCAL Approach, Glider N____, _____ feet, ____ miles ____ (N,S,E,W) of the Banning airport ____ (Direction of travel)”
- If radio contact has been made, notify SOCAL Approach prior to switching frequencies
- SOCAL will work to vector traffic out of your flight path, but they must know what your intentions are to do so effectively

San Diego Arrivals



Reduce the risk of powered traffic hazards, help ATC ensure adequate traffic separation.

- Ensure transponder is in ALT mode squawking **1202**
- Between Warner Springs and the Border, Monitor the Appropriate ATC Frequency:
 - SOCIAL on **125.3** Below 14,000 ft
 - LA CENTER on **128.6** Above 14,000 ft
- If checking in with ATC while South of Warner Springs:
"SOCAL Approach, Glider N _____, _____ feet, _____ miles _____ (N,S,E,W) of the Julian VOR _____ (Direction of travel)"
- If radio contact has been made, notify SOCIAL Approach prior to switching frequencies
- SOCIAL will work to vector traffic out of your flight path, but they must know what your intentions are to do so effectively